

# EXECUTIVE OFFICER'S REPORT – 49<sup>th</sup> AGM

It is my pleasure to present the Executive Director's report for the 2022/23 year.

## 1. Activities in the 2021/22 financial year

During the year, ARCBA performed all of its routine functions consisting of:

- Collation & release of registration statistics for 2022
- Collation & release of membership statistics
- Release of audited fiscals
- Holding the 48th Annual General Meeting
- Preparation of a report for the Cattle Council yearbook

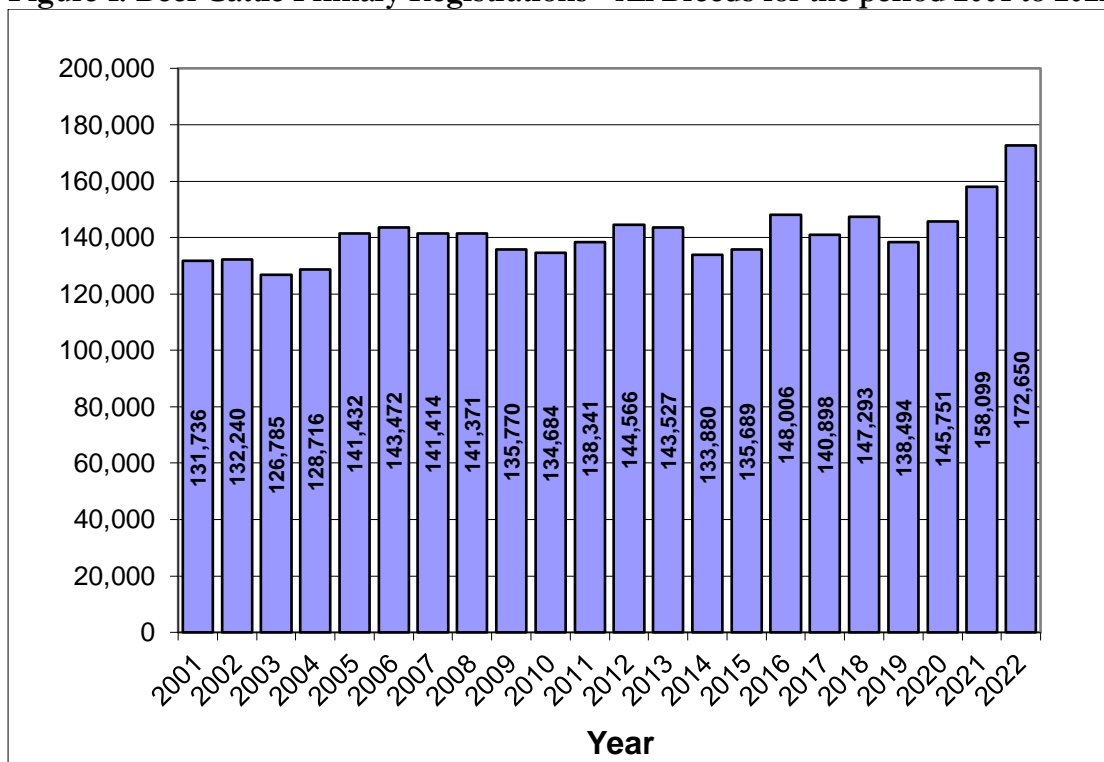
In the 2022/23 year ARCBA performed a number of other activities including:

- Collation and provision of polledness trends in the Australian seedstock industry for the Australian Beef Sustainability Framework.
- Represented ARCBA on the AUSVET Plan Valuation and Compensation Writing Group to rewrite the Manual.
- Participation in the Cattle Council/Cattle Australia Lumpy Skin Disease (LSD) and Foot and Mouth Disease (FMD) Working Group

## 2. Beef Cattle Registrations

For the 2022 year beef cattle registrations totalled **172,650**. This was 17,964 **more registrations** than in 2021 and is at a record level since records have been kept.

**Figure 1: Beef Cattle Primary Registrations - All Breeds for the period 2001 to 2022**



The composition of primary registrations by breed group in 2021 was as follows:

<b>Breed Group</b>	<b>2022 Registrations</b>	<b>% of registrations</b>
a. British breeds & Australian derivatives	86,771	50.3
b. Tropical breeds	38,772	22.5
c. European breeds & other derivatives	22,082	12.8
d. Other breeds	25,052	14.5
<b>Total</b>	<b>172,650</b>	

Primary registrations for all breed groups increased significantly in 2022

There was a large increase in the number of animals recorded in secondary registers in 2022 due to a large increase in secondary registrations by the Angus breed. A total of 85,234 animals were recorded in Secondary registers in 2022 which is the highest number in the last 20 years.. These animals represent the number of non-herdbook animals bred for seedstock production. The proportion of primary registrations has fallen by 3.21% to 66.9% and the proportion of secondary registrations has increased by 3.1% to 33.1%